

## Synvisc-One Knee Injection Information Sheet

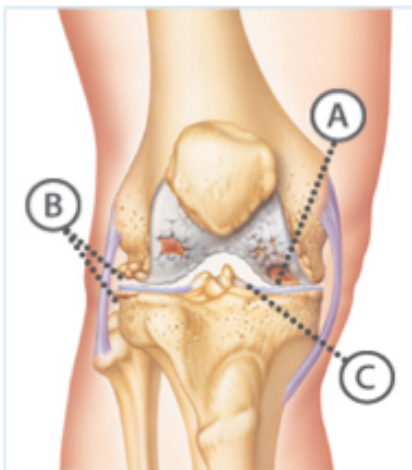
**Synvisc-One** is a single-dose injected directly into your knee that is being offered to you for treatment of osteoarthritis in your knee and can provide up to six months of osteoarthritis knee pain relief. Osteoarthritis is a type of arthritis that involves the wearing down of the cartilage (protective covering on the ends of your bones) and loss of cushioning fluid in the joint. Studies have shown Synvisc-One to help patients with osteoarthritis in moderate to severe pain that did not have sufficient relief of their pain and symptoms with diet, exercise and medications taken by mouth. Although relief can be noticed sooner, most patients experience pain relief starting approximately one month after the injection and it can provide up to six months of pain relief.

**What is Synvisc-One?** Synvisc-One is a gel-like mixture that comes in a syringe containing 6 mL (1 1/2 teaspoon) and is injected into your knee. It contains a gel-like mixture made from a substance called hyaluronan (pronounced hy-al-u-ROE-nan), also known as sodium hyaluronate that comes from chicken combs. Hyaluronan is a natural substance found in the body and is present in very high amounts in joints. The body's own hyaluronan acts like a lubricant and a shock absorber in the joint and is needed for the joint to work properly. Synvisc-One is the same formulation as SYNVISC. The only difference is that Synvisc-One is provided with one injection, compared to the three injections required for SYNVISC. Both treatments can provide up to six months of osteoarthritis knee pain relief. Synvisc-One can be repeated safely. Synvisc is FDA-approved only for injection into the knee performed by a doctor or other qualified health care professional and has not been tested to show pain relief in joints other than the knee.

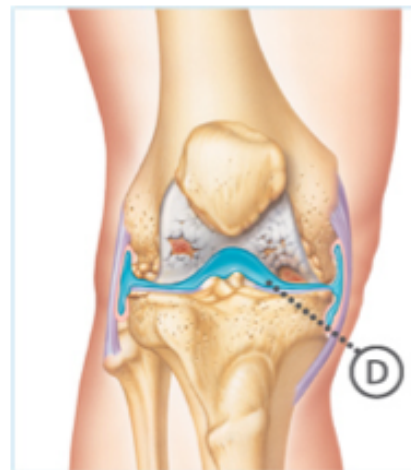
**What do I need to do after I get a Synvisc-One injection?** It is recommended you avoid strenuous activities (for example, heavy lifting or high-impact sports such as tennis or jogging) or prolonged weight-bearing activities (such as standing for more than one hour) for approximately 48 hours (two days) following injection. Ask your doctor if you have questions about resuming strenuous or weight-bearing activities. If you have any mild pain or swelling at the injection site, place an ice pack on your knee for 10 minutes or as recommended by your doctor. Other common side effects seen after a Synvisc-One injection include heat, redness and/or fluid build-up in or around the knee. Tell your doctor if you experience any side effects after treatment.

**Are there reasons why I should not receive a Synvisc-One injection?** Synvisc-One should not be used in patients who have had any prior allergic reactions to Synvisc, Synvisc-One or any hyaluronan-based products. Tell your doctor if you are allergic to feathers, eggs or poultry. Signs of an allergic reaction may include swelling of your face, tongue or throat; difficulty breathing or swallowing; shortness of breath; wheezing; chest pain; a tightness in your throat; sleepiness; rash; itching; hives; flushing and/or fever. It should not be used in patients with a knee joint infection, skin disease or infection around the area where the injection will be given, history of significant swelling, blood clots in the leg or circulatory problems in the legs.

### What is Synvisc-One?



In knees with osteoarthritis, the joint fluid (called synovial fluid) can break down and not provide the cushioning your knee needs.



Synvisc-One supplements your knee joint fluid to relieve the pain and improve the knee joint's natural shock absorbing abilities.

A. Cartilage wears away B. Bone spurs may develop C. Joint fluid breaks down  
D. Synvisc-One replaces joint fluid

## **CNMRI Payment Policy for Synvisc-One Injections**

Effective 2/1/16 CNMRI will institute the policy below for all office injections with medications supplied by the office, which includes: Synvisc One treatments for osteoarthritis of the knee. Treatments are given every 6 months, or as recommended by your physician.

CNMRI advises all patients to please check with their insurance prior to all services to determine your schedule of benefits and if a copayment, coinsurance or deductible applies. Your plan is a contract between you (or your employer) and your insurance company.

Insurance plans can check your coverage for the medication costs with the following information: **Billing Code-J7325**. Synvisc One is injected per unit and the **standard units is 48 for one side, 96 for both sides** -- please remember to specify that to your insurance carrier. Your insurance will quote you an out of pocket or deductible cost, so it is important that you specify the units. Please remember this is not an exact amount, also it is only for the medications being administered and other injection costs may apply.

### **Pre-Payment**

If your insurance requires you to pay for a deductible, copayment, or coinsurance for your administered medication you will be asked to pre-pay this portion or an estimated portion of the medication at the time of injection, prior to seeing the physician. We are not allowed to waive or reduce deductible, copayments or coinsurance amounts. For patients that do not have insurance, but require injection services, please contact our billing department to inquire about fees.

For patients with Medicare Part B health insurance with no secondary insurance coverage, you will be required to pre-pay the co-insurance amount and any deductible amounts before the medication is injected. CNMRI will collect the following prepayment amount: 48 units of Synvisc One \$130.00 or 96 units of Synvisc One \$260.00. These figures are based on the July 2015 Medicare medication pricing file and the number of units your physician recommends.

### **Specialty Pharmacy**

For patients whose insurance require your medication to be shipped through a specialty pharmacy your medications will not be billed through CNMRI. Instead the specialty pharmacy will bill your insurance direct, however you will need to approve shipment to our facility by your specialty pharmacy. Your specialty pharmacy will not ship your medication without your verbal approval. Please make sure you have approved the shipment and that your medication has arrived prior to your appointment.

### **Prior Authorization**

Our office will contact your insurance to obtain prior authorization, if necessary. Prior authorization is not a promise of payment, but an acknowledgement that your diagnosis is of medical concern. If a claim is rejected stating services are not covered, even if the diagnosis is medically valid, we will exhaust all appeal options prior to billing you. Upon receipt of your bill, please remit full payment or contact our office with any questions or concerns. You may also appeal the decision directly with your insurance carrier.

### **Outstanding Balances**

Future injections for Synvisc One will not be performed if there is an outstanding balance for any prior injection procedure. If you receive a bill for an injection that was not prepaid in full, the balance must be paid off prior to the next injection. If you are unable to make the full payment prior to your next injection appointment, we will be glad to reschedule your appointment.

For your convenience, we accept Visa, Mastercard, Discover, Check and Cash.

For more information on Synvisc One please visit their website at <https://www.synviscone.com>